



Cable ID: C01

Date / Time: 16/11/2018 22:01:11

Headroom 9.9 dB (NEXT 12-36)

Test Limit: TIA Cat 6 Channel

Cable Type: Cat 6 U/UTP

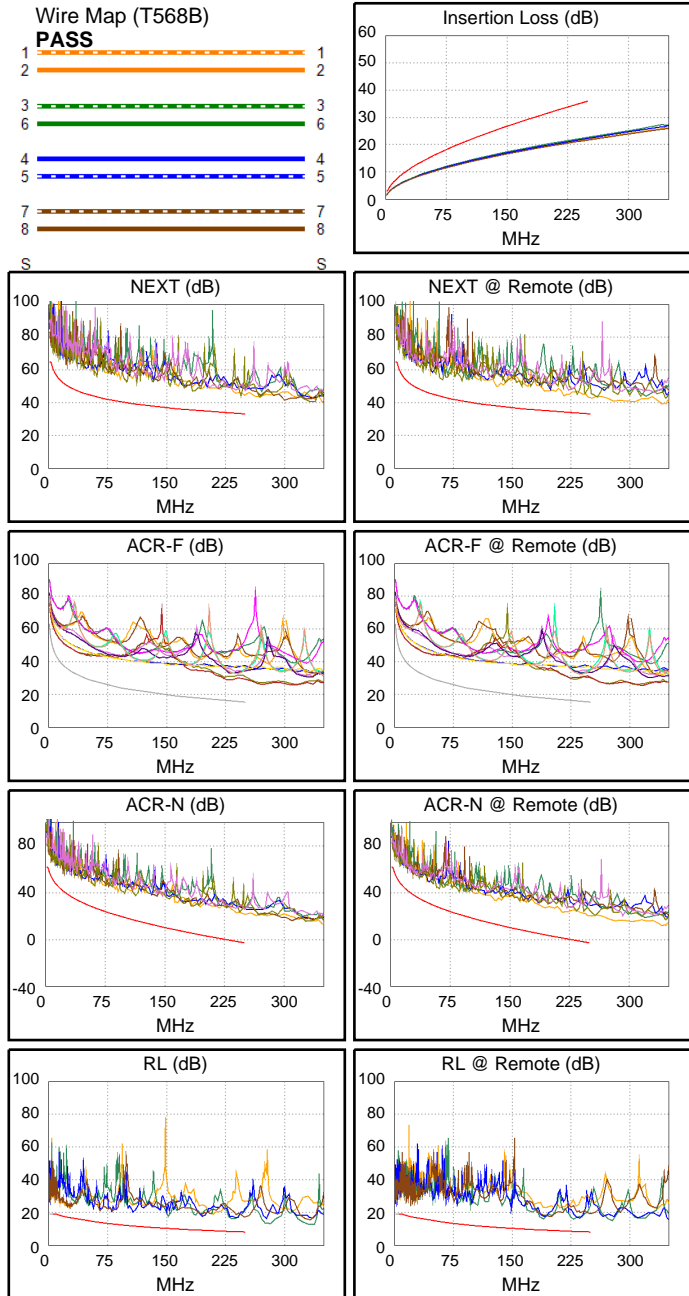
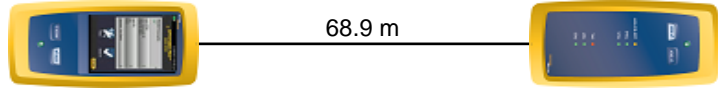
NVP: 69.0%

Operator: Cytec techno
Software Version: V6.0 Build 6
Limits Version: V7.0
Calibration Start Date:
Main (Module): 11/05/2018
Remote (Module): 11/05/2018

Test Summary: PASS

Model: DSX-8000
Main S/N: 1807282
Remote S/N: 1807109
Main Adapter: DSX-CHA804
Remote Adapter: DSX-CHA804

Length (m), Limit 100.0	[Pair 45]	68.9
Prop. Delay (ns), Limit 555	[Pair 12]	351
Delay Skew (ns), Limit 50	[Pair 12]	18
Resistance (ohms)	[Pair 36]	11.47
Insertion Loss Margin (dB)	[Pair 36]	13.2
Frequency (MHz)	[Pair 36]	250.0
Limit (dB)	[Pair 36]	35.9



Worst Case Margin Worst Case Value

PASS	MAIN	SR	MAIN	SR
Worst Pair	36-78	12-36	36-78	12-36
NEXT (dB)	10.5	9.9	10.5	9.9
Freq. (MHz)	245.0	249.5	245.0	249.5
Limit (dB)	33.3	33.1	33.3	33.1
Worst Pair	36	36	36	36
PS NEXT (dB)	10.8	11.3	10.8	11.3
Freq. (MHz)	245.0	250.0	245.0	250.0
Limit (dB)	30.3	30.2	30.3	30.2

PASS	MAIN	SR	MAIN	SR
Worst Pair	45-36	36-45	45-36	36-45
ACR-F (dB)	12.6	12.6	12.6	13.2
Freq. (MHz)	231.5	2.6	231.5	231.5
Limit (dB)	16.0	54.9	16.0	16.0
Worst Pair	36	45	36	45
PS ACR-F (dB)	13.7	13.9	14.2	14.6
Freq. (MHz)	1.4	1.4	231.5	231.5
Limit (dB)	57.5	57.5	13.0	13.0

N/A	MAIN	SR	MAIN	SR
Worst Pair	36-45	36-78	12-36	12-36
ACR-N (dB)	14.0	13.8	24.3	23.1
Freq. (MHz)	3.9	4.9	250.0	249.5
Limit (dB)	59.3	57.2	-2.8	-2.8
Worst Pair	36	36	36	36
PS ACR-N (dB)	13.8	14.6	23.7	24.6
Freq. (MHz)	5.1	5.0	245.0	250.0
Limit (dB)	54.2	54.5	-5.2	-5.8

PASS	MAIN	SR	MAIN	SR
Worst Pair	12	36	36	36
RL (dB)	5.9	6.7	7.4	7.5
Freq. (MHz)	26.4	189.5	234.5	228.5
Limit (dB)	16.9	9.2	8.3	8.4

Compliant Network Standards:
 10BASE-T 100BASE-TX 100BASE-T4
 1000BASE-T 2.5GBASE-T 5GBASE-T
 ATM-25 ATM-51 ATM-155
 100VG-AnyLan TR-4 TR-16 Active
 TR-16 Passive